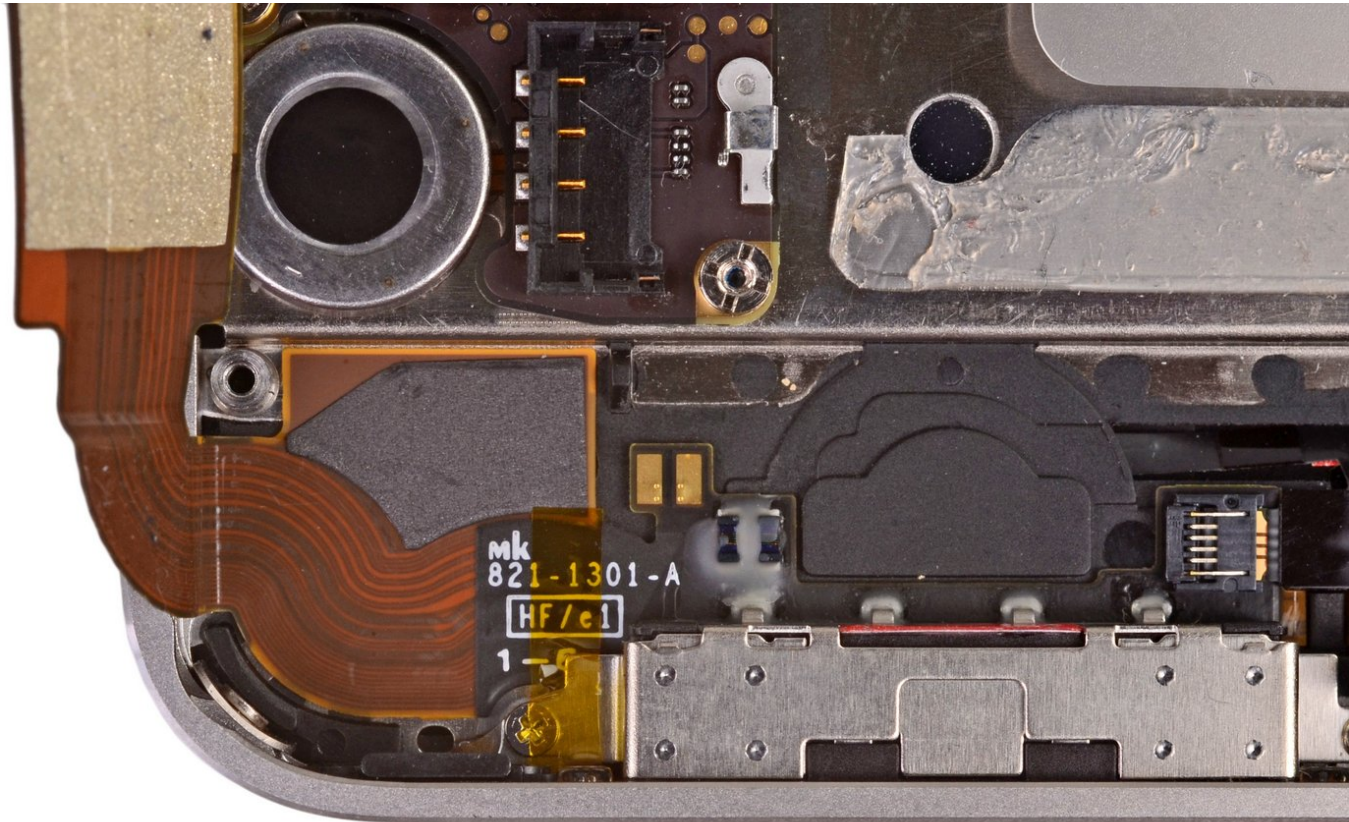


# FIXBAR

## iPhone 4s 尾插排线更换方法

此教程只适用于更换iPhone4s损坏的尾插排线

Written By: xiaohang



## INTRODUCTION

尾插排线包含充电接口、Home键链接触点，送话器等部件，如果遇到无法充电、送话器不灵以及更换Home排线后也无法使用，就可以考虑更换此尾插排线，更换排线有一定的风险，建议找专业维修人员，本教程图片来源ifixit，FIXbar维修工坊翻译重新整理。



### TOOLS:

- [螺丝刀](#) (2)  
五星、十字
- [镊子](#) (2)  
直头、弯头
- [撬棒](#) (1)



### PARTS:

- [iPhone4s尾插排线](#) (1)

## Step 1 — 拆后盖



❗ 拆机器前首先要进行关机。

- 在手机底部拆除两颗3.6mm的无星螺丝。

⚠ 只能使用专用的五星螺丝刀拆除，并且只有尾插部分是五星螺丝，也就是说，五星螺丝刀只能用于拆除尾部螺丝。

## Step 2



- Push the rear panel toward the top edge of the iPhone.
- The panel will move about 2 mm.

### Step 3



- Pull the rear panel away from the back of the iPhone, being careful not to damage the plastic clips attached to the rear panel.
- Remove the rear panel from the iPhone.



## Step 4



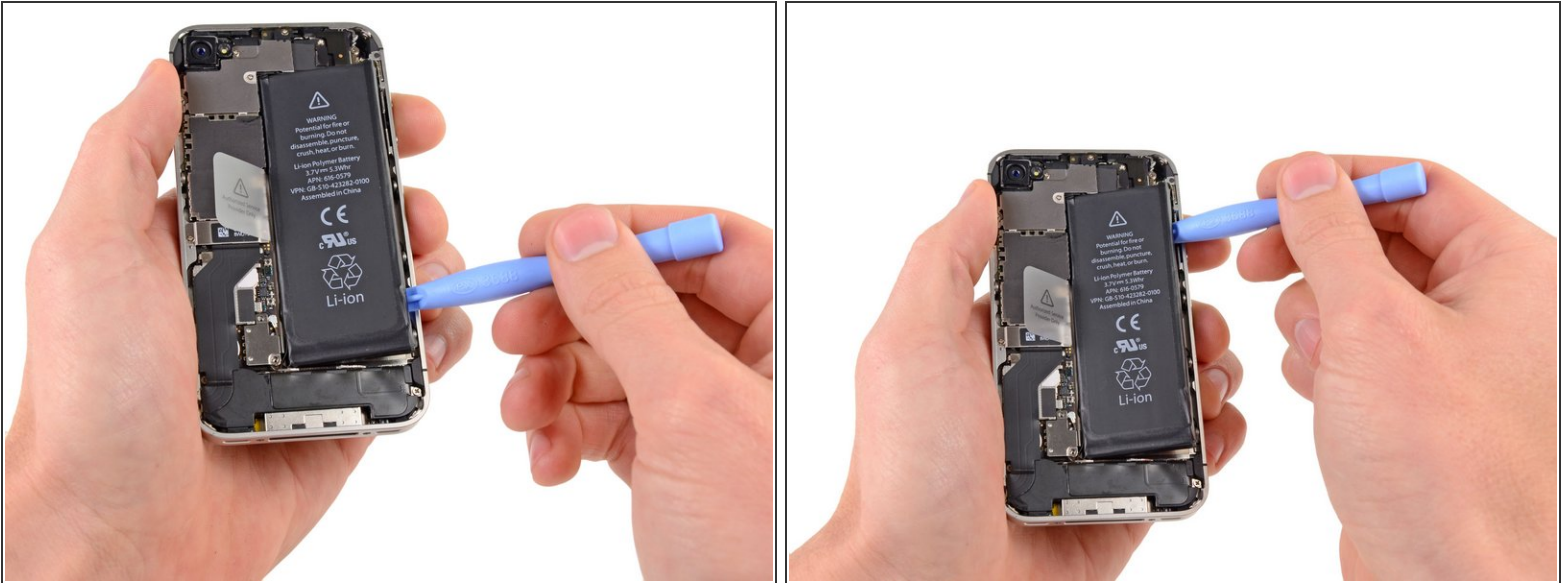
- Remove the following screws securing the battery connector to the logic board:
  - One 1.7 mm Phillips screw
  - One 1.5 mm Phillips screw.
- Use a plastic opening tool to gently detach the battery connector from the socket on the device. Start lifting off the connector from the bottom side, by placing the tip of the tool between the loudspeaker enclosure and the metal cover of the connector.
- ⓘ The battery connector comes off vertically from the logic board. Do not apply force sideways.
- Pay attention to the pressure contact underneath the top screw of the battery connector. This may come loose while prying the battery connector from its socket.

## Step 5



- Use a plastic opening tool to pull the pressure contact from underneath the battery connector.
- ⚠ When reinstalling the pressure contact, be sure to clean it with a degreaser such as windex or isopropyl alcohol. The oils on your fingers have the potential to create wireless interference.
- ⚠ Take notice of the position of the small black ground clip on the upper screw of the battery connector. This clip is attached only by the upper screw. When reinstalling, it must be aligned so the gold contact point will press against the back cover.
- Be careful not to rip off the battery connector socket soldered on the logic board. There are 4 very small soldering points awaiting this mistake!

## Step 6



- Insert the edge of a plastic opening tool between the battery and the outer case near the bottom of the iPhone.
- Run the plastic opening tool along the right edge of the battery and pry up at several points to completely separate it from the adhesive securing it to the outer case.

## Step 7



- Use the exposed clear plastic pull tab to peel the battery off the adhesive securing it to the iPhone.
- Remove the battery.



## Step 8



- Remove the following screws securing the dock connector cable cover to the logic board:
  - One 1.5 mm Phillips screw
  - One 1.2 mm Phillips screw
- Remove the metal dock connector cable cover.

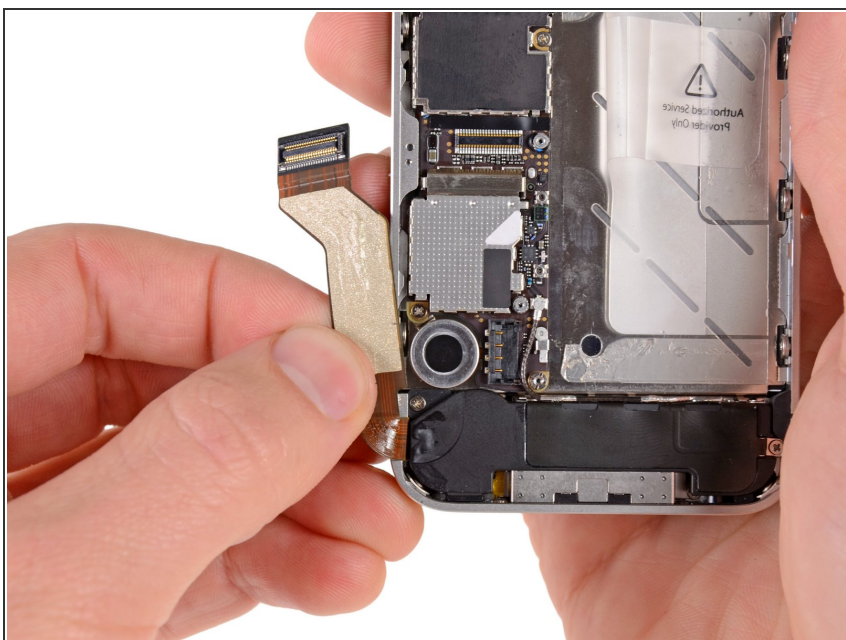


## Step 9



- Use the edge of a plastic opening tool to pry the dock cable up from its socket on the logic board.

## Step 10



- Peel the dock connector cable off the adhesive securing it to the logic board and the side of the speaker enclosure.

## Step 11



- Use the edge of a plastic opening tool to pry the cellular antenna cable up from its socket on the logic board.
- De-route the cellular antenna cable out from under the metal fingers attached to the logic board.

## Step 12



- Remove the two 2.4 mm Phillips screws securing the speaker enclosure assembly to the outer case.

## Step 13




- Remove the small black spacer that was under the Phillips screw near the vibrator.




## Step 14



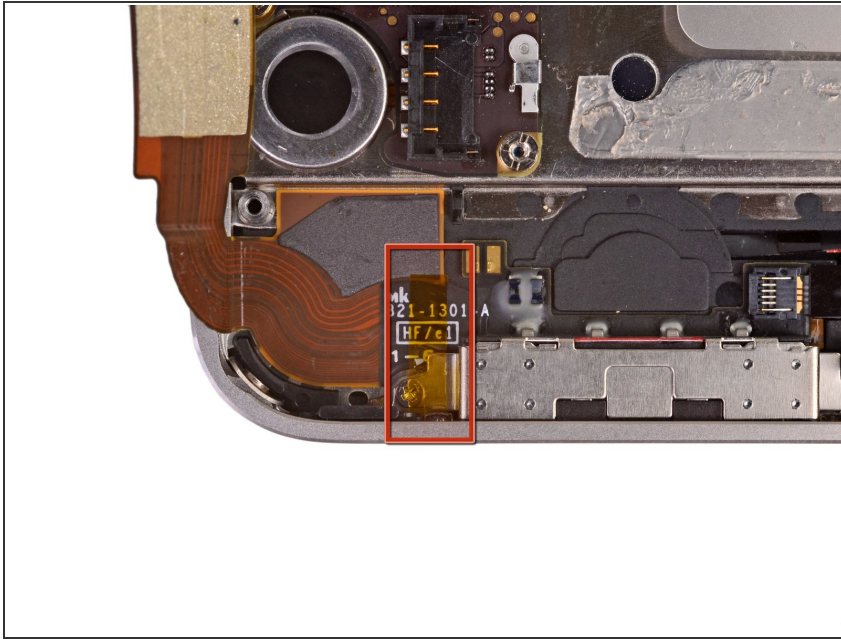
- Use a plastic opening tool to lift the speaker enclosure assembly out of the case, being sure not to damage the EMI fingers on the attached Wi-Fi antenna.
- Remove the speaker enclosure assembly.

 Before reinstalling the speaker enclosure assembly's screws, be sure the Wi-Fi grounding fingers are installed below the lip in the iPhone's metal case as seen in the third picture.

 Before reassembly, be sure to clean all metal-to-metal contact points between the grounding fingers of the Wi-Fi antenna and the case of the iPhone with a de-greaser such as windex or isopropyl alcohol. The oils on your fingers have the potential to cause wireless interference issues.

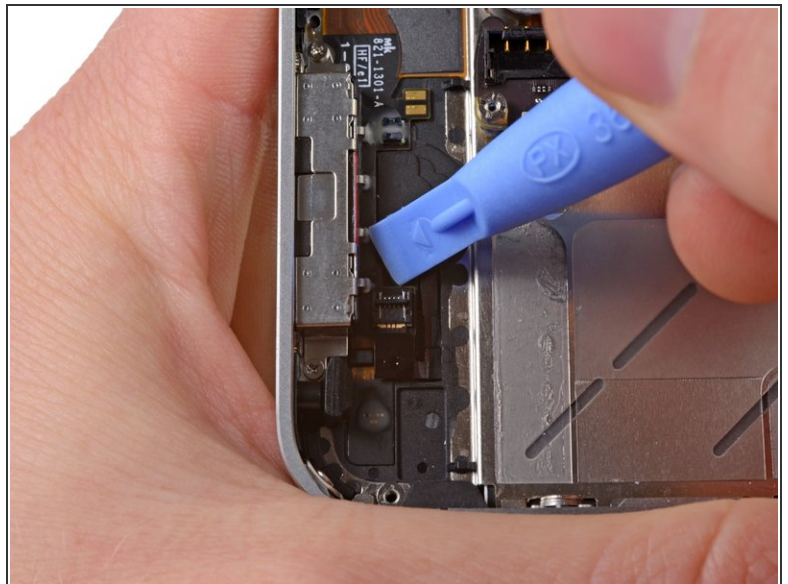
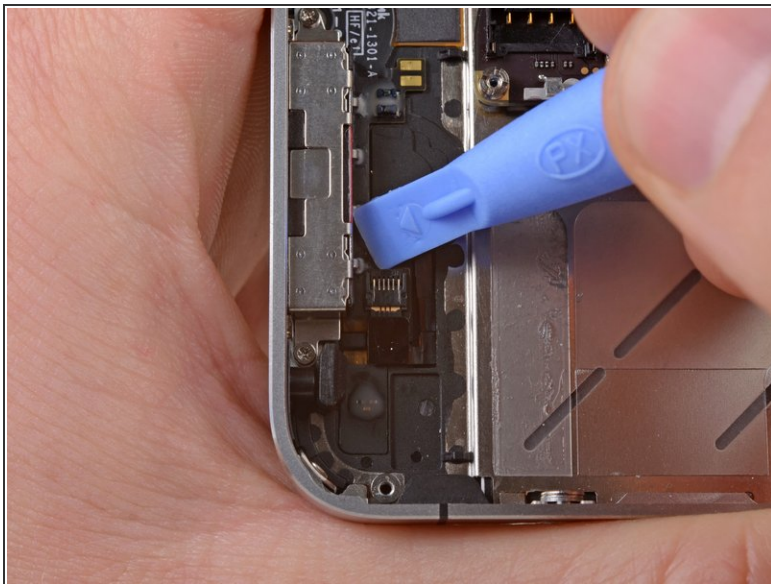


## Step 15



- If present, remove the small strip of tape covering one of the dock connector screws.

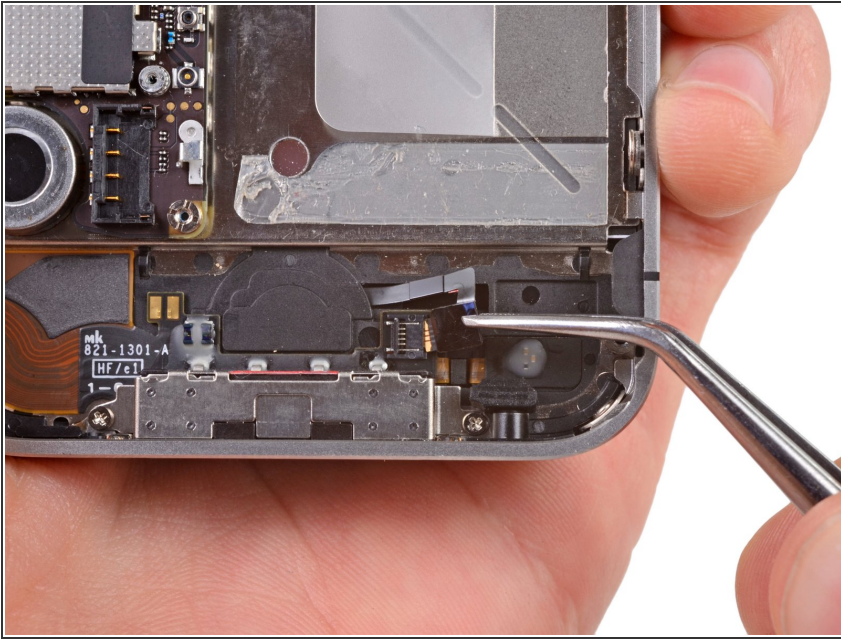
## Step 16



- Use a plastic opening tool to flip up the retaining flap on the home button ribbon cable ZIF socket.

⚠ Be sure you are prying up on the hinged retaining flap, not the socket itself.

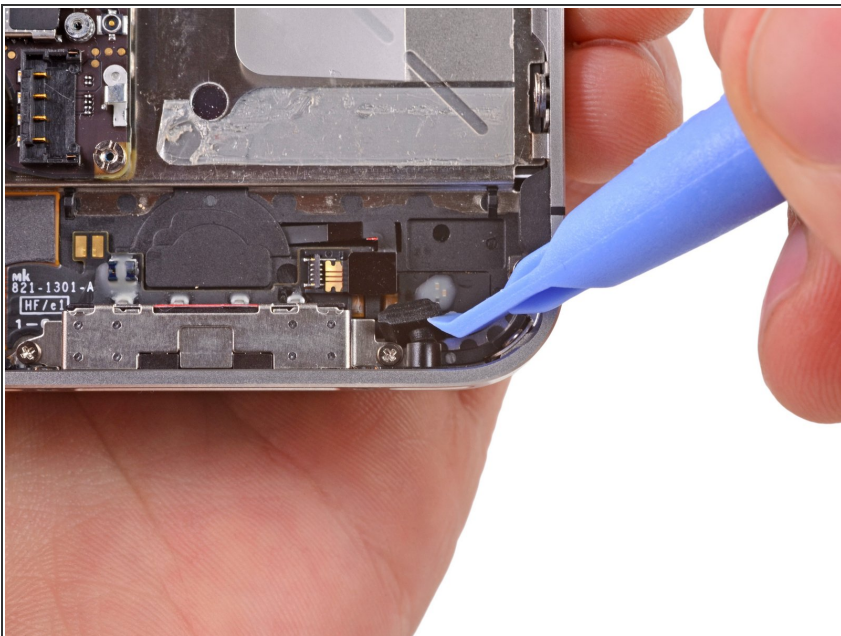
## Step 17



- Use a pair of tweezers to pull the home button ribbon cable out of its socket.

⚠ There are tiny components on the back side of the ribbon, so be careful not to damage them upon ribbon removal.

## Step 18



- Carefully pull the rubber microphone holder out of its tube in the bottom edge of the iPhone.

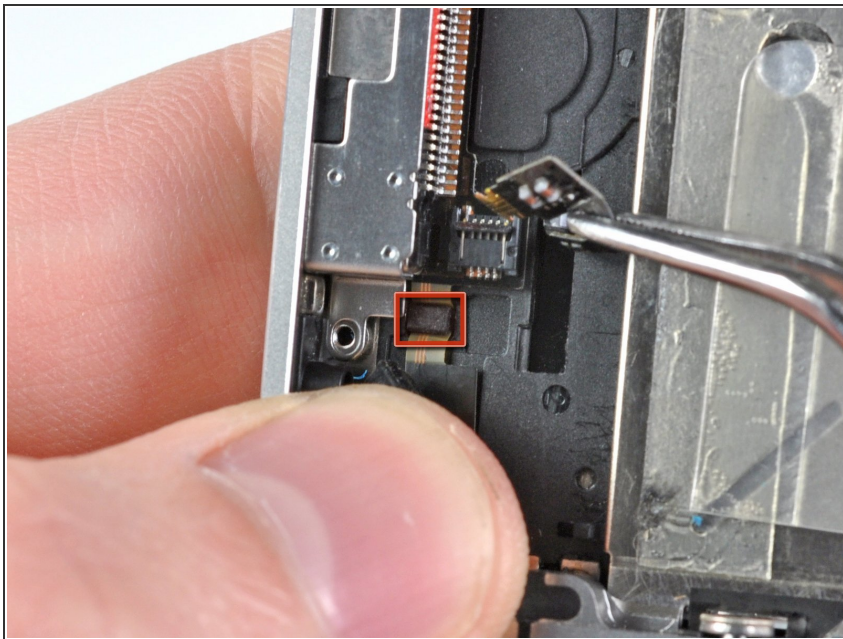


## Step 19



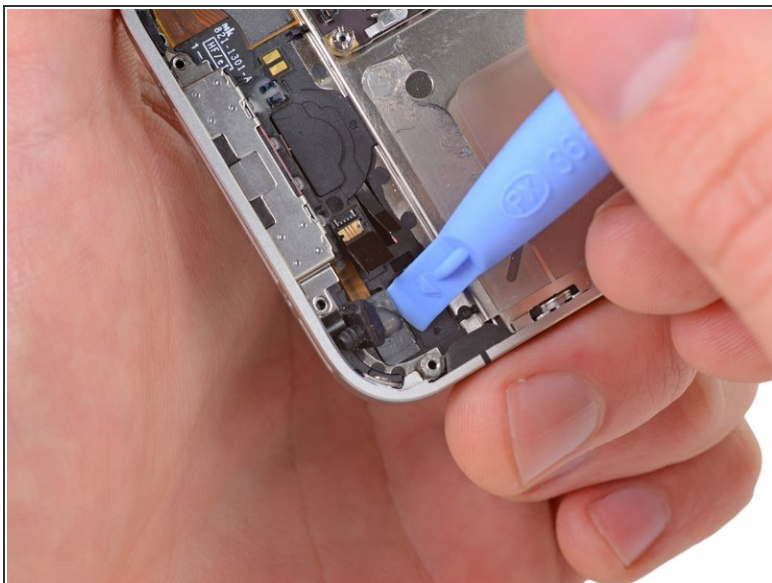
- Remove the two 1.3 mm Phillips screws securing the dock connector to the case of the iPhone.

## Step 20



- Remove the tiny rubber spacer near the dock connector.

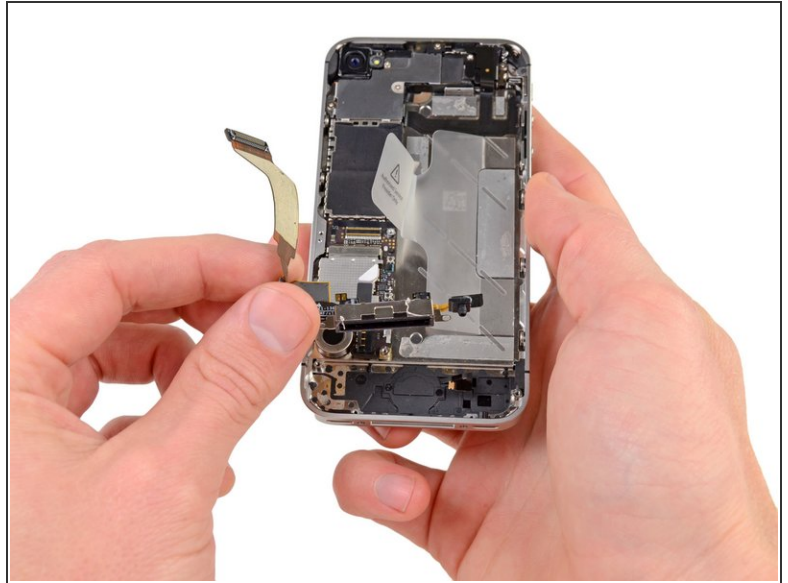
## Step 21



- Use the edge of a plastic opening tool to peel the dock connector and its cable off the black plastic case of the iPhone.
- ☑ If you are replacing the dock connector with a new part, make sure to transfer the rubber casing around the microphone. You can do this using a spudger.



## Step 22



- Pry the dock connector away from its opening at the bottom of the iPhone.
- Remove the dock connector.